





VIGTIGT / IMPORTANT

 Information om indsejling til Vallensbæk og Ishøj havne.

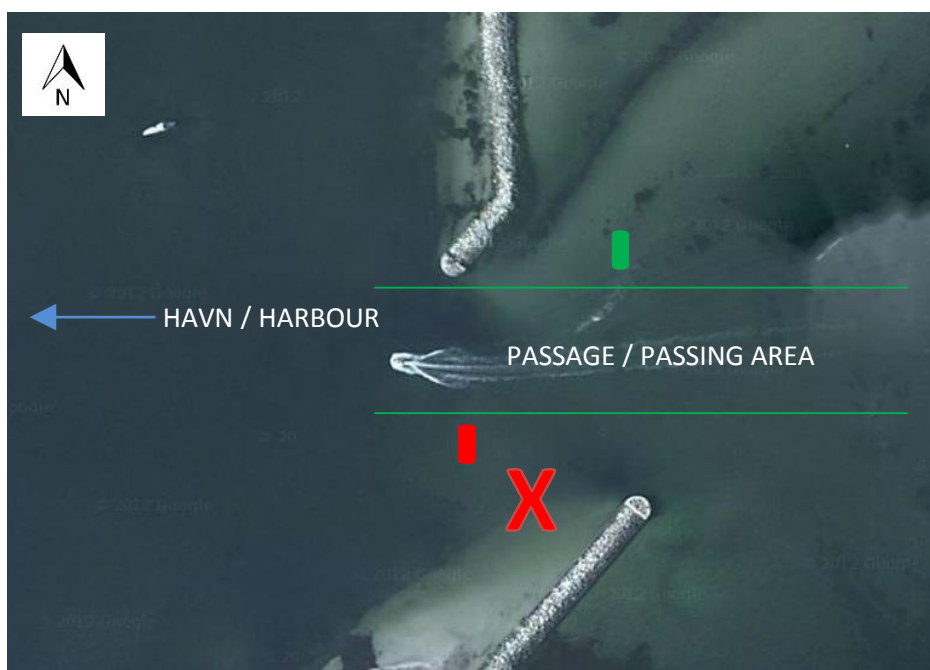
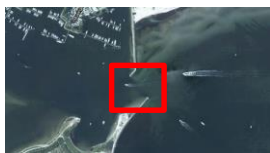
 Information on approach to the harbours Vallensbæk and Ishøj.

 Advarsel ! Indsejlingen til Vallensbæk og Ishøj havne er rykket fra det sydlige molehoved til det nordlige molehoved, efter at uddybning er foretaget. Den markerede passage på billedet herunder, er nu mellem 3,0 og 3,5 meter dyb.

Ved indsejling holdes den grønne bøjle uden for havnen på styrbords side og den røde bøjle i indsejlingen på bagbords side. Indsejling bør foretages med forsigtighed.

 Warning ! The passage area to the harbours Vallensbæk and Ishøj has been moved from the south pier to towards the north pier, after excavation has been done. The marked passage area shown on the image below, is now between 3,0 and 3,5 meters deep.

When approaching the harbour, please keep the green navigation marking outside the harbour to starboard and the red marking between the piers to port. Please pay attention during approach.



Vallensbæk, July 5th, 2013